

MONTHLY MEMBERSHIP PROGRESS REPORT

District 202 E

Results as of: 11/30/2023

GMT:

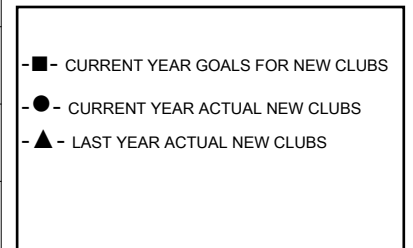
LOCATION NEW ZEALAND

GMT CA

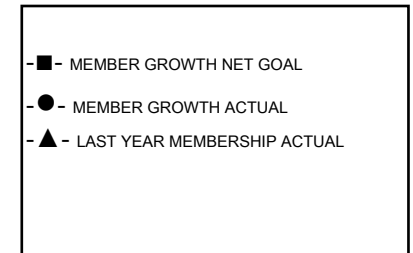
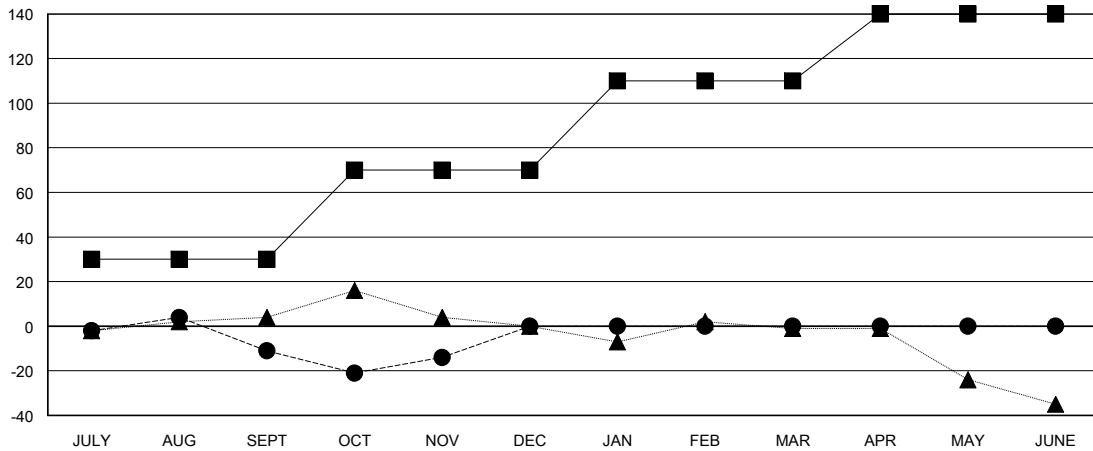
Clubs			
RESULTS FOR 2023-2024			
QUARTER	NEW CLUB GOAL	NEW CLUBS	DROPPED CLUBS
JULY/AUG/SEPT	0	0	0
OCT/NOV/DEC	1	0	0
JAN/FEB/MAR	0	0	0
APR/MAY/JUNE	0	0	0

Members			
RESULTS FOR 2023-2024			
QUARTER	MEMBER GROWTH NET GOAL	MEMBER GROWTH ACTUAL	DROPPED MEMBERS ACTUAL (including transfers)
JULY/AUG/SEPT	30	42	44
OCT/NOV/DEC	40	21	18
JAN/FEB/MAR	40	0	0
APR/MAY/JUNE	30	0	0

GOALS AND ACTUAL NEW CLUBS CUMULATIVE



GOALS AND ACTUAL MEMBERS CUMULATIVE



DROPPED CLUBS: 0	22 CLUBS OF 42 ADDED 1 OR MORE NEW MEMBERS	GENDER DISTRIBUTION MALE 812 (70.18%) FEMALE 345 (29.82%)
DROPPED MEMBERS DECEASED 7 CLUB CANCELLED 0 OTHER 55 TOTAL 62	CLICK HERE FOR CUMULATIVE MEMBERSHIP DATA	TOTAL FAMILY UNIT MEMBERS 68 FAMILY MEMBERS PAYING HALF DUES 34